



our office and factory

► ENGINEERS FOR THE FEED INDUSTRY

Almex extrusion techniques specialises in single screw extrusion equipment, from the extrusion unit to complete installations. We are a family owned, independent company since 1970.

Almex extruders and Contivar™ expanders are in use worldwide at fishfeed-, oil extraction-, petfood-, animalfeed plants, the foodindustry, the processing and chemical industries.



EXTRUSION TECHNIQUES

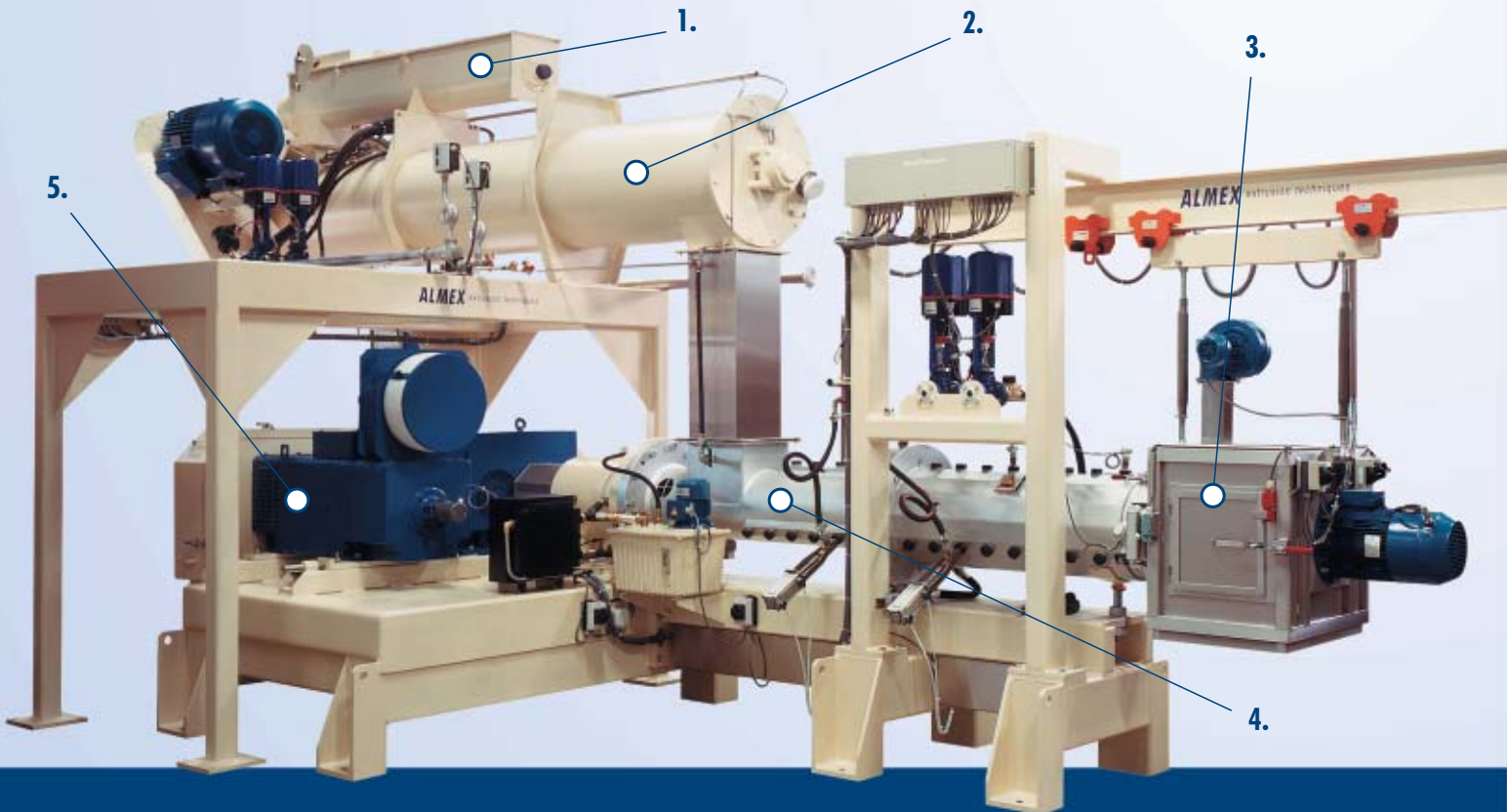
Almex extruders are used in petfood, fish feed, animal feed, oil seed processing and chemical industries. The same quality extruder parts are used to manufacture Contivar™ Expanders for the feed industry, a popular machine to improve feed quality.

The robust, basically simple design of the Almex equipment guarantees years of trouble free service. Almex was the first company using D.C. drives on single screw extruders in order to select the extrusion shaft speed to match the product and selected die specifications. Using D.C. drives the extruder becomes a tool that can be precisely tuned in order to assure quality of the product.

AL

▶ AL300 EXTRUDER WITH V-BELT DRIVE

1. FEEDER
2. CONDITIONER
3. CUTTER ASSEMBLY
4. EXTRUDER BODY
5. DC DRIVE



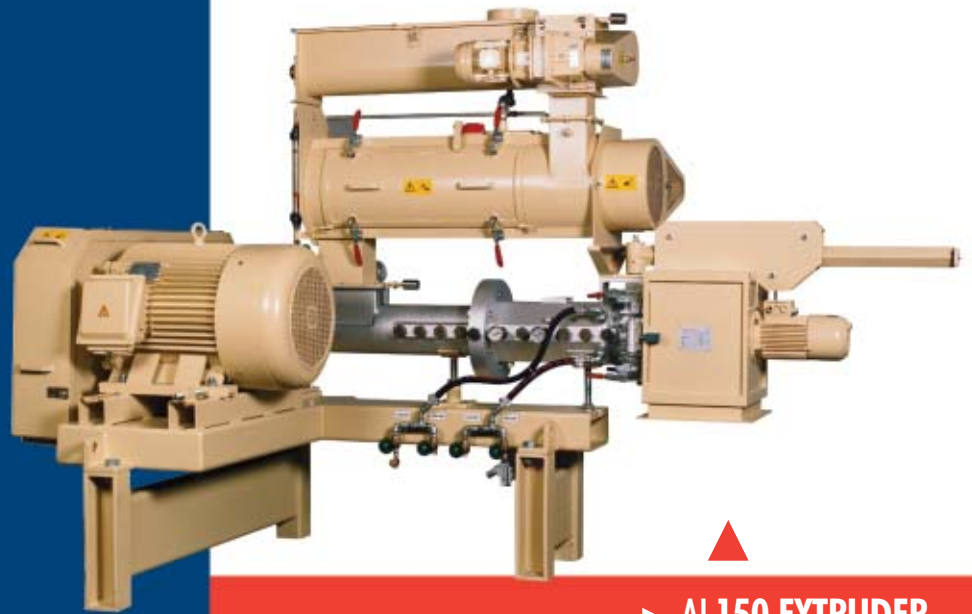
300

The first extruder built by Almex in 1970 is still in use 24 hours a day. Modifications and in time changing of wear parts keep this unit up to date. Almex carries an inventory of spares that enables sending of parts world wide within 24 hours. In order to cut downtime of machinery Almex has an exchange system for all major wearparts and spare parts.



Almex extruders are used for:

- Extrusion-cooking
- Cooking-forming
- Conditioning prior to other processes
- Forming
- Co-extrusion
- Semi moist
- H.T-S.T. processes
- Pre-extraction processes
- Densifying
- Expanded feed production

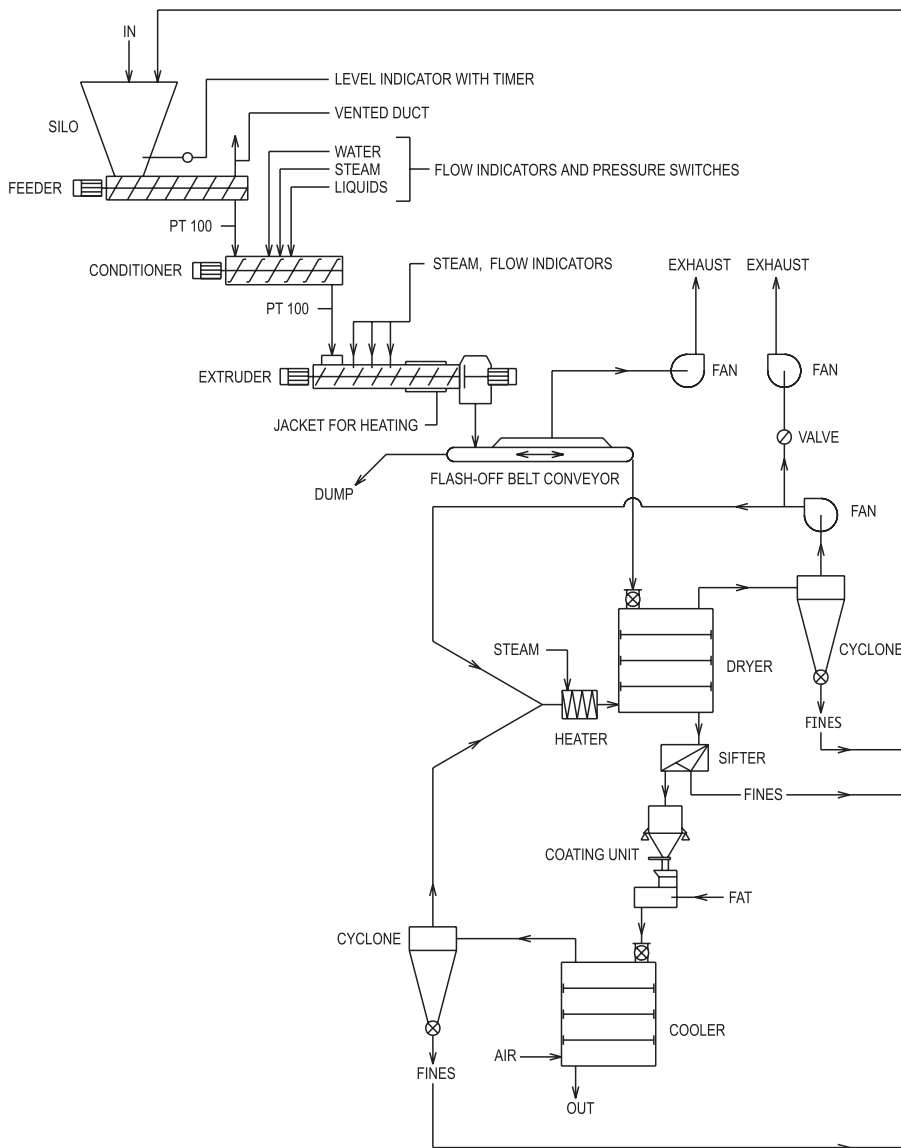


▶ AL150 EXTRUDER



▶ AL300 EXTRUDER WITH INLINE DRIVE

WWW.ALMEX.NL



► TECHNICAL DATA

Type	AL150	AL200	AL300	AL350	AL400
Main motor (kW)	45 - 75	75 - 132	132 - 315	315 - 400	400 - 500
Cuttermotor (kW)	1.5	2.2	7.5	11	15
Extruder barrel diameter (mm)	150	200	300	350	400
Capacity (ton/hour)	0.5 - 1.2	1.5 - 3.0	2.5 - 8.0	4.0 - 9.0	7.0 - 15.0

A flexible, universal, single screw extruder with unmatched quality and possibilities.

► ALMEX B.V.

P.O. box 150
7200 AD Zutphen, Netherlands

Verlengde Ooyerhoekseweg 29
7207 BJ Zutphen, Netherlands

tel.: +31 (0)575 57 26 66
fax: +31 (0)575 57 27 27

internet: www.almex.nl
e-mail: info@almex.nl